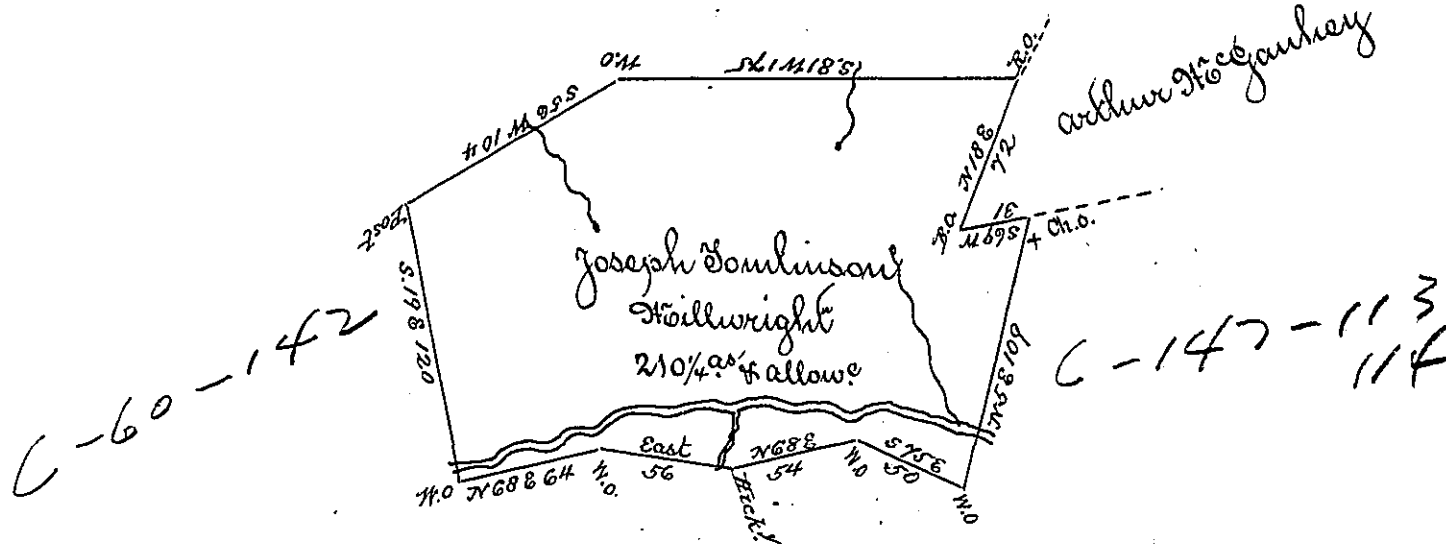


C-153-232



Situated on both sides of the Road leading from Bedford to Darlem between the place known by the name of Raifes & Madshers in Bedford Township Bedford County containing 210 1/4 acres with the usual allowance of six ft for roads &c surveyed for Joseph Tomlinson Stillwright the 12th day of August 1795. on Warrant dated the 10th day of February 1794.

To Daniel Brodhead Esq. S. C.

George Woods Junr. D. D.

IN TESTIMONY that the above is a copy of the original remaining on file in the Department of Internal Affairs of Pennsylvania, made conformably to an Act of Assembly approved the 16th day of February, 1833, I have hereunto set my Hand and caused the Seal of said Department to be affixed at Harrisburg, this seventh day of June 1898.

James W. Fatta
Secretary of Internal Affairs.